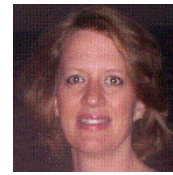


The SOFFI MethodSM: Supporting Oral Feeding in Fragile Infants
Dr Erin Sundseth Ross, PhD, CCC-SLP
Monday 10th – Tuesday 11th July, 2017
Gold Coast University Hospital, Gold Coast, QLD



This 2 day course provides immediately applicable practical information to help clinicians better identify and treat the factors that impact successful oral feeding of preterm and ill term infants. Utilizing a multidisciplinary approach—both in the NICU and after discharge to early intervention through the first six months—the course emphasizes strategies to facilitate infant abilities and develop caregiver feeding skills. Breastfeeding is emphasized as the best feeding method for infants, with some strategies to support breastfeeding. However, most of the feeding strategies are for bottle feedings, since more infant feeding problems occur with bottle feedings. The objective is to identify feeding readiness and provide intervention strategies from a framework of normal development. A holistic approach integrating the medical fragility of these infants is emphasized, using the BROSS approach and the SOFFISM Method.

Participants will be able to apply course learning immediately to:

- Identify necessary components of infant development that indicate a readiness to begin and sustain oral feeding, including physiologic, motor and state organization.
- Discuss the development of oral-motor skills in preterm infants.
- Describe the interaction between medical and developmental levels as they relate to feeding readiness and the progression.
- Identify infants who are not following a normal progression.
- Use the BROSS approach to identify the development of oral feeding skills and use the SOFFI MethodSM feeding decisions and interventions strategies.
- Use principles of normal development and developmentally supportive care to facilitate feeding progression, to include contributions of both the family and the professional team.
- Identify the impact of various medical conditions on oral feeding success.

Level of instruction: Intermediate to Advanced. This workshop is designed for individuals with several years experience working with family and staff to support oral feeding for infants in, or just discharged from the intensive care nursery, including speech/language pathologists, nursing staff, occupational therapists, physical therapists and early interventionists.

Erin Ross, Ph.D. is the creator of the SOFFI MethodSM 2008 which is currently recommended by the National Association of Neonatal Nurses to be used in conjunction with their new feeding guidelines. She is the proprietor of Feeding FUNdamentals, LLC. Dr Ross received her Master's degree in Speech and Language Pathology in 1988 and received her Doctoral degree in Clinical Sciences – Health Services Research from the University of Colorado in 2007. Dr Ross is currently a Clinical Instructor in the School of Medicine, Department of Pediatrics, at the University of Colorado Denver, and works in the NICU within several HealthONE hospitals and at the SOS Feeding Solutions clinic in Denver, Colorado. Dr Ross is on the faculty of Rocky Mountain University of Health Professions. She has specialized clinically in the development of feeding skills in medically fragile children for over 20 years, and her research focuses on the etiology and treatment of feeding and growth problems in infants and children. Dr Ross is the President and CEO of Feeding FUNdamentals, LLC.

Cost: \$615.00 (incl GST)

The SOFFI MethodSM: WORKSHOP DETAILS

Schedule Day One	
7:30-8:00	Registration
8:00-9:00	Introduction & Welcome Family Roles and Expectations for Successful Nurturing and Feeding
9:00-10:00	Feeding as a Developmental Process–Physiologic, Sensory and State Development
10:00-10:15	Break
10:15-11:45	Feeding as a Developmental Process – Oral-motor Development
11:45-12:45	Lunch
12:45-1:30	Feeding as a Developmental Process-Across the first year!
1:30-3:00	Medical Issues that Impact Feeding Skills: Chronic lung disease, cardiac defects, oral-Motor deficits, gastrointestinal disorders
3:00-3:15	Break
3:15-4:30	Effects of the NICU Experience: Changing the focus from volume to skill to build a foundation for optimal feeding and growth
4:30-5:15	Developmental Steps to Eating: The BROSS approach
5:15-5:30	Introduction to the SOFFI Method SM
Schedule Day Two	
8:00-10:15	Using the SOFFI Method SM to Guide Decisions Regarding Readiness and Interventions for Infants Not Nipple (Bottle) Feeding
10:15-10:30	Break
10:30-11:45	Using the SOFFI Method SM to Provide Supportive Interventions for Nipple (Bottle) Feeding (1)
11:45-12:45	Lunch
12:45-2:30	Using the SOFFI Method SM to Provide Supportive Interventions for Nipple (Bottle) Feeding (2)
2:30-2:45	Break
2:45-4:00	Using the SOFFI Method SM to Provide Supportive Interventions for Nipple (Bottle) Feeding (3)
	<i>Please bring bottles/teats you use or have questions about for the hands on portion.</i>

The SOFFI MethodSM: Supporting Oral Feeding in Fragile Infants
Dr Erin Sundseth Ross
Monday 10th – Tuesday 11th July, 2017
Gold Coast University Hospital, Gold Coast, QLD

Workshop Registration Form
Registration due by COB: Tuesday 4th July, 2017

Registration fees include: workshop handouts, an attendance certificate for health professionals who attend the full workshop, morning and afternoon tea, and a light lunch.

Note: Group catering is provided. No individual orders are available. Please advise if you have special dietary requirements. Every effort will be made to accommodate special dietary requirements.

TO REGISTER:

1. Go to the website <https://www.bpoint.com.au/payments/goldcoasthhs.eforms/71520202392>
2. **Registration Cost: \$615.00 [GST incl]**

Have the following information available prior to registering online:

REGISTRANT DETAILS:

(This section is related to the clinician who will be attending the course)

- Name of clinician attending (this name will appear on the certificate of attendance)
- Clinician's email
- Contact phone number
- Special dietary requirements:
- Clinician's profession:
- Clinician's workplace:

PAYMENT DETAILS:

This section is related to the person / officer who will be paying for the registration.

- Name on the card:
- Credit card number, expiry date and CCV
- Email address:
- Phone number:
- Workplace:

Website: <https://www.bpoint.com.au/payments/goldcoasthhs.eforms/71520202392>

Email enquiries: Kelly.Weir@health.qld.gov.au or Kelly.Weir@griffith.edu.au