



**Bold ideas,
better solutions**
2018 > The Hopkins Centre
Symposium

The Hopkins Centre

Research for Rehabilitation and Resilience



Metro South Health



Queensland
Government

A joint initiative of the
Division of Rehabilitation, Metro South Health, and
Menzies Health Institute Queensland, Griffith University.

PROGRAM

BIBS18

NOVEMBER 15TH |
TRANSLATIONAL RESEARCH
INSTITUTE | PRINCESS
ALEXANDRA HOSPITAL
BRISBANE, AU

Symposium proceedings, presentations and posters will be available following the event on The Hopkins Centre website at www.hopkinscentre.edu.au/bibs2018.

ACKNOWLEDGEMENT AND SPECIAL THANKS TO THE SYMPOSIUM ORGANISING COMMITTEE

Organising Committee: Prof. Michele Foster (Chair), Macarla Kerr, Melissa Hoskins, A/Prof. Carolyn Ehrlich, Dr Ali Lakhani, Dr Karleigh Kwapil, Dr Brooke Wadsworth, Dr Mandy Nielsen, Dr David Trembath, Rob Moloney, Dr Kerrin Watter, and Michael Deen.

Stay connected and up to date with THC research on twitter @Hopkins_Centre



Username: **BIBS18**
Password: **THCBIBS18**

WELCOME

Welcome to Bold ideas, better solutions 2018, The Hopkins Centre research symposium on Thursday 15 November 2018 at the Translational Research Institute on the Princess Alexandra Hospital campus. Bold ideas, better solutions 2018 is the premier knowledge forum for clinicians, researchers, service users and industry partners interested in progressive ideas and research based solutions to complex challenges in the field of disability and rehabilitation.

The Hopkins Centre: Research for Rehabilitation and Resilience, an initiative of Griffith University and the Division of Rehabilitation, Metro South Hospital and Health Service, promotes high quality interdisciplinary research with real translational impact that improves the lives of people with lifelong disabling conditions. The Centre plays a key role in shaping service delivery and support systems by advancing research on clinical, social and environmental issues that can have a positive effect on the wellbeing of people with rehabilitation needs and disability.

Bold ideas, better solutions 2018 celebrates the contribution of different knowledges by featuring the stories of individuals who live with disabling conditions, conversations with disability advocates, and up-to-date interdisciplinary research from clinicians, academics and industry. A further highlight of the 2018 symposium is a keynote address on inclusive and collaborative disability research by leading policy researcher, Professor Karen Fisher from University of New South Wales.

Join us for Bold ideas, better solutions 2018 and play your part in inspiring bold research that shapes the future of our disability and rehabilitation services.



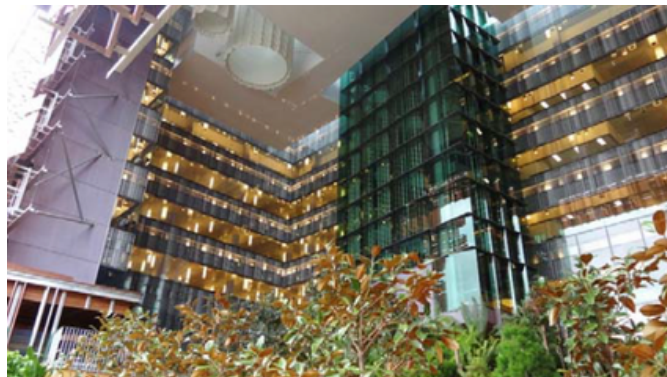
Professor Elizabeth Kendall
Menzies Health Institute QLD
Griffith University



Professor Tim Geraghty
Division of Rehabilitation
Princess Alexandra Hospital



Professor Michele Foster
Division of Rehabilitation
Princess Alexandra Hospital
Menzies Health Institute QLD
Griffith University



THE HOPKINS CENTRE

The Hopkins Centre Research for Rehabilitation and Resilience is committed to improving disability and rehabilitation practices, service delivery and systems by developing, translating and implementing interdisciplinary research evidence about real world problems.

The Centre has premises at Griffith University Logan campus, Gold Coast campus and Princess Alexandra Hospital, Metro South Health. The combination of these locations facilitate opportunities for research exchange and excellence between clinical experts, practitioner researcher and academics.

The Centre is ideally positioned to lead translation of research into policy and clinical practice as it brings together and formalises collaborations between experienced rehabilitation clinicians, expert academic researchers, community practitioners, policy-makers and consumers.

The Centre focuses on research of relevance to people living with the long-term consequences of acquired brain injury, amputation, persistent pain, and spinal cord injury as well as developmental, age-related and other life-long disabling conditions.

By creating an environment for sustainable collaborations and partnerships, we will expand research potential and impact in Queensland and beyond.

THC TRANSLATIONAL RESEARCH AWARD

The annual Hopkins Centre Translational Research Award acknowledges the value of collaboration and productive interdisciplinary research links between practice, academia and industry, and the importance of research having translational potential.

This year the award has been sponsored by Carter Newell Lawyers, with the focus on translational impact or the potential to translate into better practices, services and systems for people with people with complex health needs or lifelong disabling conditions.

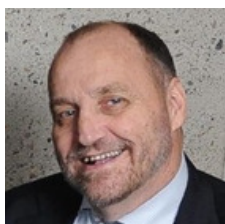
The winner will be announced during the closing remarks of Bold ideas, better solutions symposium on Thursday 15 November 2018.

The Hopkins Centre is also proud to announce the inclusion of the Emerging Researcher Award. This Award recognises evidence of excellence in research productivity relative to opportunity, at an early stage of the individual's research career. The recipient will also demonstrate the ability to inspire, excite, and engage others in research, including colleagues, clients, and consumers. The award is proudly sponsored by the Clinical Excellence Division, Queensland Health and will also be awarded during closing remarks at the Bold ideas better solutions symposium.



OUR PATRON & AMBASSADORS

Our patron and ambassadors are passionate and strong advocates who actively promote and support The Hopkins Centre mission, research, events, and vision of the future in which dignity is a driving principle for all interactions that involve people with disabilities. They are all dedicated and influential members of the community who are experts in managing the impact of disability and sharing their experience about the process of recovery and living with disability. We are honored to have the support of Patron Mr Kevin Cocks AM, co-lead Dr. Mandy Nielsen and the following ambassadors of The Hopkins Centre Ambassador Council, who are committed to leading a significant agenda of change through citizen-led research and embedding people with disability into the fabric of research and practice.



Mr Kevin Cocks AM is a well-respected influential advocate and until recently, was the Queensland Anti-Discrimination Commissioner. After sustaining a spinal injury as a young person, he has made it his goal to ensure no one is left behind. He brings a wealth of experience to this role, with his expertise focused on protecting the principles of dignity and equality for everyone and striving towards a more inclusive society for all. He has dedicated his life to fighting for an inclusive, accessible and diverse Queensland through legislative and policy reform and State-wide advocacy.

The council is co-led by Dr Mandy Nielsen, a well-known local social worker and Research and Development Officer for the Acquired Brain Injury Transitional Rehabilitation Service (ABI TRS). She completed her PhD in chronic pain after sustaining a crippling back injury and has worked tirelessly for many years to improve services for people with chronic pain. She is a board member of Chronic Pain Australia, and served as Vice President for 10 years.



Dr Dinash Palipana

Resident in Emergency medicine at the Gold Coast University Hospital. Dinesh is an Australian doctor, legal professional and disability advocate. He is the first quadriplegic medical intern in Queensland, Australia. During his rehabilitation he became an advocate by raising awareness and funding for spinal cord injury. He is a founding member of Doctors with Disabilities Australia.



Mr Tim McCullam

Australia's most exciting and loved local performers appearing on Charnel g's 'The Voice'. His most recent accolades include National Ambassador of Spinal Cord Injury Awareness Week, National Disability Awards Guest Artist & International Day for People With A Disability Ambassador.



Mr Alan 'Hammer' Bloore

Global Ambassador for Richemont Group 1999-2018
Fundraising ambassador for "Sporting Wheelies and Disabled Association"
Patient educator, Advocate and Presenter representing Old Health and PAH Spinal Unit Spinal Injury Association Presenter



Ms Tiffany Middleton

Active sports journalist and communication professional
Masters of Public Health on the experience of women with disabilities
Following a life changing cycling accident, is interested in promoting consumer engagement in research and improve the delivery of services for people with orthopaedic injuries and amputations..



Dr Michelle Owens

General Practitioner, Advocate for acquired brain injury services after a life changing car accident which left her in hospital for 9 months. She has contributed to websites, Government Inquiries, and Commissions while continuing to raise her two children. She strongly believes that therapy services must be delivered early and intensively to help people regain their abilities.



Mr Stephen Dale

Speaker, Trainer, Mentor, Published Author
After years of managing his own recovery, Stephen now speaks professionally to students, business owners and the public about resilience and strategies for taking control of one's own life..



Dr Gary Allen

Senior Policy Officer, Office for Research, Griffith University
His knowledge & expertise in regards to the national/international governance of ethical conduct in research has resulted in him serving on numerous national committees. Gary is a current member of the Australian Health Ethics Committee and is serving on a number of NHMRC working groups.

Learn more about the Ambassador Council, research projects and initiatives on the THC website for more information about each Ambassadors and Council projects and initiatives at: <https://www.hopkinscentre.edu.au/ourambassadors>





PROGRAM

0830	Registration open – photographic exhibition and research poster showcase
0930–1000	Welcome and official opening Professor Elizabeth Kendall, <i>Executive Director, The Hopkins Centre</i> Acknowledgement of Country, Ms Lauraine Barlow (<i>Jana-n Jigiddirri Jigiddirri Buligud</i>) <i>Elder of Mandingalpa Clan, Yidiny tribe and Kulla Kulla Clan, Lama Lama,</i> <i>Health advocate, Community worker and Citizen researcher</i> Ms Janine Walker, <i>Chair, Metro South Hospital and Health Board</i> Mr Kevin Cocks AM, <i>Patron for The Hopkins Centre and Human Rights Advocate</i>
1000–1020	Invited speaker Mr Robin Franklin, <i>Brain Injury Rehabilitation Unit Volunteer, Metro South Health</i>
1020-1030	Singing Cords Program Mr Tim McCallum, <i>Hopkins Centre Ambassador and International singer</i>
1030–1100	Morning tea
1100–1215	Mapping, access and outcomes - parallel session one, TRI auditorium Chair: Mr Michael Deen Trajectories of rehabilitation across complex environments (TRaCE): Progress and preliminary findings Dr Melissa Legg, <i>The Hopkins Centre</i> Filling the transitional care gap: First year outcomes of the Acquired Brain Injury Transitional Rehabilitation Service Pilot Program Dr Mandy Neilson, <i>The Hopkins Centre and Division of Rehabilitation, Metro South Health</i> Minor stroke patients have health, service and social needs that are not met by current healthcare systems Dr Emma Finch, <i>University of Queensland and Princess Alexandra Hospital</i> Identifying structural barriers inhibiting the access and use of health services among people with spinal cord injury Mr Peter Harre, <i>Spinal Life Australia, affiliate partner of The Hopkins Centre</i> Predictors of Self-Rated Health Post-Injury: Findings from claimants in Queensland Dr Srinivas Teppala, <i>The Hopkins Centre</i>



1100–1215	Responsive Service Systems - parallel session two, seminar room Chair: Dr Ben Turner <hr/> Examining vocational rehabilitation in early ABI rehabilitation Ms Alena Murray, <i>Acquired Brain Injury Transitional Rehabilitation Service, Metro South Health</i> <hr/> Addressing client needs through interdisciplinary multi-site groups in Acquired Brain Injury Transitional Rehabilitation Service Ms Nina Wegener <i>Acquired Brain Injury Transitional Rehabilitation Service, Metro South Health</i> <hr/> The Guddi Framework Ms Cathy Paxton, <i>Synapse, affiliate partner of The Hopkins Centre</i> <hr/> Introducing Australia's first purpose-built, transitional housing complex for Aboriginal and/or Torres Strait Islander people with acquired brain injury Dr Courtney Wright, <i>The Hopkins Centre</i> <hr/> Identifying areas with high levels of greenspace in relation to people with disability in South-East Queensland Dr Ali Lakhani, <i>The Hopkins Centre</i>
1215–1315	Lunch
1315–1400	Candid Conversations: Public images and perceptions of disability in society TRI Auditorium Conversations with three people impacted by disability: <i>Nick Rushworth, Executive Officer, Brain Injury Australia</i> <i>Tim McCallum, Hopkins Centre Ambassador and International singer</i> <i>Belinda Adams, Creative producer and Advocate for people with disabilities at Synapse</i> <i>Facilitated by Emma Griffiths, ABC Journalist and host of 'Focus' radio show</i>
1400-1500	Optimising Clinical Interventions - parallel session three, TRI Auditorium Chair: Dr David Trembath <hr/> Designing An App-Based Platform To Promote Activity-Based Therapy Adherence For Spinal Cord Injury Associate Professor James St John, <i>Menzies Health Institute Queensland, Griffith University</i> <hr/> Bold Patients, Better Outcomes: Three year outcomes from The Bone Clinic Prof. Belinda Beck, <i>The Hopkins Centre & Professor of Exercise Science, Griffith University</i> <hr/> Mouthpiece Ventilation – Positively INSPIRational Mrs Gabrielle Ferguson, <i>The Hopkins Centre</i> <hr/> Can we avert the negative psycho-behavioural consequences of diagnostic spinal imaging? Dr Daniel Harvie, <i>The Hopkins Centre and NHMRC Fellow, Menzies Health Institute Queensland, Griffith University</i>

1400-1500	Supporting enhanced networks - parallel session three, seminar room Chair: Mr Ray Quinn Person-centred approaches to disability support: why families are important Emeritus Professor Lesley Chenoweth, <i>The Hopkins Centre, Menzies Health Institute Queensland, Griffith University</i> Understanding network responses after catastrophic injury: a study of family workload and capacity Associate Professor Carolyn Ehrlich, <i>The Hopkins Centre</i> Building evidence-informed services for Functioning, Disability and Health in northern Australia Associate Professor Ruth Barker, <i>James Cook University</i> Frontline dynamics of compassion in inpatient rehabilitation nursing Dr Letitia Burridge, <i>The Hopkins Centre</i>
1500-1520	Afternoon tea
1520-1605	Inclusive person-centred research and social policy - TRI Auditorium Keynote speaker: Professor Karen Fisher <i>Professor in Social Policy Research Centre, University of Sydney</i> Introduced by Professor Michele Foster, <i>Research Director, The Hopkins Centre</i>
1605-1645	Enhancing the rehabilitation experience: A vision for research - TRI Auditorium Invited speakers: Professor Louise Gustaffson, <i>The Hopkins Centre and Professor of Occupational Therapy, Griffith University</i> Professor Michel Coppieters, <i>The Hopkins Centre and Professor of Allied Health Research, Menzies Health Institute Queensland, Griffith University</i> Dr Dinesh Palipana, <i>Emergency Doctor at Gold Coast University Hospital, Researcher with Spinal Cord Injury Project, Griffith University and Ambassador for The Hopkins Centre</i> Facilitated by Professor Timothy Geraghty, <i>Medical Chair, Division of Rehabilitation, Metro South Health and Deputy Director, The Hopkins Centre</i>
1645-1700	Closing remarks and awards <i>TRI Auditorium</i> Professor Elizabeth Kendall, <i>Executive Director, The Hopkins Centre</i>
1700	---end---
1700-1800	Meet and mingle (canapés and drinks will be provided)

Last updated 24 October 2018. Updates to the program may occur.



Breakfast Forum



Thank you to everyone that presented, attended and begun their busy day at the Bold ideas better solutions breakfast forum. The forum addressed the features and challenges of choice and control in lifetime care and support. Guests heard from key industry bodies on individualised planning, financial sustainability, and how research might provide solutions. Be part of the conversation and join us to ignite new ways of thinking, harness new collaborations, and inspire excellence at www.hopkinscentre.edu.au/bibs2018.

NIISQ On Tour: Photographic exhibition sharing what life looks like after serious personal injury

The National Injury Insurance Scheme Queensland (NIISQ) photographic exhibition has arrived at the Bold ideas, better solutions symposium!

Highlighting what life looks like after serious personal injury, the exhibition captures everything from farm life to flying and skateboarding to being out and about with the family. The exhibition was originally held in Brisbane in 2017 and invited amateur and professional photographers to submit photographs within the theme of "a day in the life of an individual living with serious personal injury".

Shane Daley's photograph Kintsugi: The New Me took out first place with a close up self portrait of his face painted with gold cracks borrowed from the concept of Kintsugi, the Japanese art of repairing broken ceramics with gold. The creative concept delivered visibility to an often invisible traumatic brain injury.

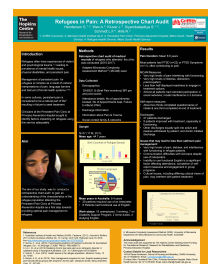
Yin and Yang by Sharyn Bartels-Waller was reflective of the perseverance and determination of individuals to adapt to their new life roles following serious personal injury. The simple heart-warming photograph of a father enjoying time with his toddler twins was awarded the second place prize.

View the entire collection online at www.niis.qld.gov.au/about-us/photographic-exhibition/peoples-choice/



Poster Display

Take your time to check out the showcase of posters on display highlighting the research topic range from promoting positive environments, optimising service systems, through to enhancing engagement and developing sustainable frontline capacity. If you do not get the opportunity to view all the posters -check them out online following the event at www.hopkinscentre.edu.au/bibs2018



KEYNOTE SPEAKER PROFESSOR KAREN FISHER

Dr Karen Fisher is a Professor at the Social Policy Research Centre at UNSW Sydney. She conducts disability policy in Australia and China. Her research interests are the organisation of social services, including disability, mental health and housing; and inclusive research and evaluation methods. Her work with people with disability, government and organisations informs policy change including implementation of the NDIS.

Dr Fisher is published in over 50 journal articles, numerous book chapters and over four books on disability policy and social services in China. She leads the Social Policy Research Centre Disability Research Program, as well as is a foundation member of the Board of the Disability Studies and Research Institute; and a Disability Community Visitor for accommodation services for people with disability.



Keynote abstract: Inclusive and collaborative disability research and evaluation

The purpose of inclusive research or peer-led practice is to improve the quality of research and services. Ways to include people affected by research in project teams include employment, governance or collaboration with organisations who represent them. Karen Fisher will discuss examples of these inclusive and collaborative research practices to explore the ethical and practical considerations of this approach to research. She will also discuss how these examples demonstrate impact on the quality of the research and service improvement.

INVITED SPEAKER MR ROBIN FRANKLIN

Mr Robin Franklin has a professional background in law and is currently a peer support leader in acquired brain injury (ABI).

Robin is a Vietnam Veteran and has a degree in Arts from Griffith University. Robin worked as an industrial relations professional with BP Australia Limited and Thiess Contractors Pty Ltd, before studying law at Queensland University of Technology. Robin became a partner at Franklin Athanasellis Cullen Employment Lawyers in 2002 and after deciding to 'semi-retire' in 2017 he has consulted for the firm. Robin volunteers at Greenslopes Hospital and Princess Alexandra Hospital. His focus at the PA is supporting individuals who have sustained an acquired brain injury and their families.



CANDID CONVERSATIONS

Session Facilitator: Emma Griffiths
Bold Ideas better solutions on the ABC!

Award winning ABC journalist, Emma Griffiths is the host of 'Focus' ABC Brisbane radio show and today's facilitator in discussion with influential speakers on the public perception and image of disability in society. From breaking news and political reporting to the latest in entertainment, Emma Griffiths loves the variety of journalism and radio. Taking up a post in Moscow for several years saw Emma reporting on the school siege in Beslan, the political upheavals of Ukraine's "orange" revolution, travelling to the Arctic circle and of course, keeping a close eye on Vladimir Putin. The road from Moscow led to Sydney and Canberra, for a long stint of political reporting, including several years reporting from the Parliament House bureau. Emma has now moved back to Brisbane and is the host of 'Focus' ABC radio show every week day morning from 10am.



'Candid Conversations' is guaranteed to be a thought-provoking session with critical messages that could positively change the perceptions and experiences of people with disability in our society. The session to be aired on the ABC the week following the symposium. For more details, go to www.hopkinscentre.com.au

Invited Presenters

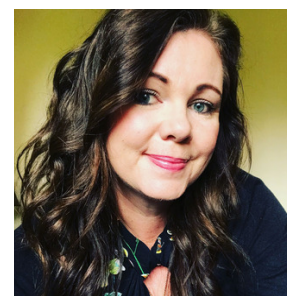
Tim McCallum is an International singer and advocate for people living with disability. He was well on his way to commencing a successful career in the music & theatre industry when a diving accident changed his life forever, leaving him a quadriplegic. His resilient character and extraordinary spirit have touched the hearts of the arts community, as they have watched him defy the odds, rehabilitate and return to the stage to continue his performing career.



Nick Rushworth is a journalist and Executive officer of Brain Injury Australia. Nick sustained a severe traumatic brain injury as a result of a bicycle accident, before joining Brain Injury Australia. Formerly an Award winning producer with the Nine Television Network's "Sunday" program and ABC Radio National. Nick is currently facilitating a national "community of practice" agenda with the core purpose to optimise both needs ascertainment and plan fidelity for NDIS participants with a brain injury.



Belinda Adams is a mother, budding screen writer and advocate for people with disability. Belinda and her family have been personally touched by brain injury, with her son receiving life threatening injuries following a car crash in March 2012. She was an integral part in her son's rehabilitation and is still key in his continued rehabilitation. With her first hand experience of brain injury, Belinda shares her story with others through her films and partners with Synapse in their mission to reconnect those in the community living with or affected by a Brain Injury.



Read more about there inspirational stories and journey of rehabilitation at www.hopkinscentre.edu.au/invitedspeakers

ENHANCING THE REHABILITATION EXPERIENCE: A VISION FOR RESEARCH

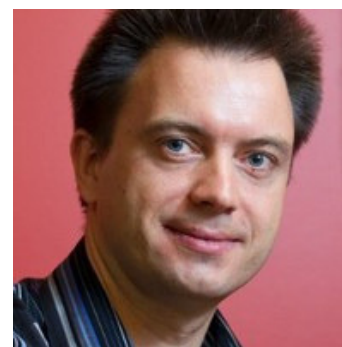
PROFESSOR LOUISE GUSTAFSSON

Prof Gustafsson has consistently conducted research that has contributed to the development of clinical practices. She has two main research areas: the first is in the field of stroke rehabilitation and recovery, with a focus on transition to home and community living. The second area is to support people and their carers with maintaining their community mobility and engagement. She has supervised over 53 honours students to first class honours and supervised 18 research higher degree students, 5 to completion and 13 current. She has a career total of 90 publications and has received grants to the value of \$3 million dollars. Dr Gustafsson has experience in quantitative, qualitative methodology and mixed methodology.



PROFESSOR MICHEL COPPIETERS

Michel is a Professor in Musculoskeletal Physiotherapy with Griffith University and has many years of teaching experience and research expertise and knowledge. Professor Coppieters did his studies at the University of Leuven in Belgium including his PhD titled 'Physical examination of treatment of neurogenic disorders of the upper quadrant. A Manual therapeutic perspective'. Since 2005, he has attracted AUD ~2.3 million in research funding as chief investigator. In addition, he was listed as an associate investigator on a successful NHMRC Program Grant (AUD 7.5 million: Musculoskeletal pain, injury and health: improving outcomes through conservative management. Chief investigators: Hodges P, Bennell K, Jull G, Vicenzino B).

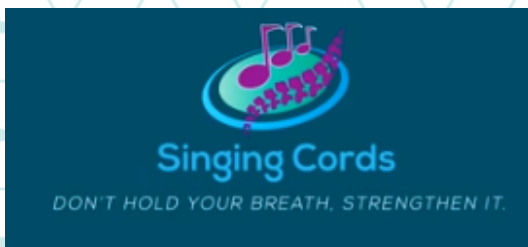


DR DINESH PALIPANA

Dinesh was the first quadriplegic medical intern in Queensland, and the second person to graduate medical school with quadriplegia in Australia. Dinesh earned a Bachelor of Laws (LLB), prior to completing his Doctor of Medicine (MD) at the Griffith University. Halfway through medical school, he was involved in a catastrophic motor vehicle accident that caused a cervical spinal cord injury. After graduating from medical school Dinesh faced significant challenges in gaining an internship. As a result of the barriers medical students and doctors with disabilities face, he has advocated for an inclusive medical profession. Dinesh eventually became a founding member of Doctors with Disabilities Australia. Dinesh is currently a resident in emergency medicine at the Gold Coast University Hospital. He is a lecturer at the Griffith University.



SOME THC PROJECTS IN FOCUS



Singing Cords is a peer-led program to enhance breathing and voice control for people with spinal cord injuries.

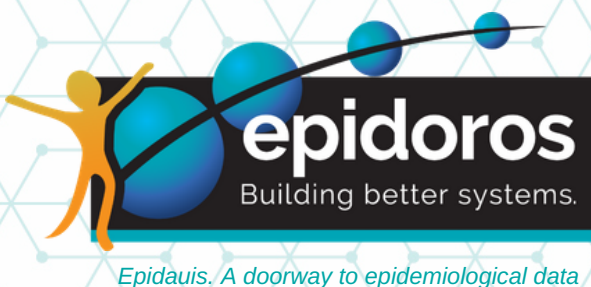
Developed by Tim McCallum, professional performer and singer, this volunteer run program hopes to become an integral part of rehabilitation support offering wellbeing & quality of life improvements long term.

HabiTec is a sociotechnical space for consumers, practitioners, developers and researchers to work together to test rehabilitation processes, tools and technologies. HabiTec refers to home and living environment coming together with technology or IT. This project aims to improve access through ethical and consumer-centric projects.



TRaCE is tracking trajectories and outcomes from inpatient services to the community and for 12 months post-discharge. This research will provide vital evidence about services people access and where more are needed to achieve better outcomes for people with spinal cord and brain injury and their families..

Dignity is a social change project to build a more accepting and supportive community that protects the dignity of all people, especially those who rely on others to live well. Through the creative sharing of history and experience, Dignity is promoting respect and ensuring accessible environments.



Epidoros is a data matrix that allows the integration of multiple datasets, all linked to a common spatial reference point securely shared with the research and service planning community for data mining. A range of tools can be made available for those who wish to use the dataset, including GIS tools, process mining and modelling programs.

Read more about our research projects online at www.hopkinscentre.edu.au/projects

Sponsors

With special thanks to the following sponsors and partners:

PLATINUM



GOLD



SILVER



*Proudly supported by the Clinical Excellence Division,
Queensland Health, Queensland Government*

PARTNERS



AFFILIATE PARTNERS



NEW AFFILIATE PARTNERS



The shared history between The Hopkins Centre and **RACQ** dates back to 1905. The founding president of the RACQ, Dr George Hopkins is the great grandfather of Dr Paul Hopkins who the namesake of the The Hopkins Centre. Both THC and RACQ are embracing this pioneer spirit, values and vision in driving improvements in service delivery at the interface of research, clinical practice, and community. Andrew Johnson, RACQ Claims General Manager, says that 'RACQ are very excited to be involved in research that will lead to better access, better advocacy and better systems of support'

This partnership with **GCUH** will kick-starts a number of important studies focussed on brain rehabilitation including the relationship between sleep and function in recovery; the importance of natural and built environments to rehabilitation treatments and the effectiveness of transcranial magnetic stimulation (TMS) in mobility and mental health. Dr Ben Chen, Medical Director says, 'We need smart ways to improve outcomes for patients and their families. Research with the Hopkins Centre team located here at the hospital, will tackle this problem into 2030'



Sponsor Contact Details

National Injury Insurance Agency, Queensland

Phone 1300 607 566
Email Kate.lewin@niis.qld.gov.au
Web www.niis.qld.gov.au

Motor Accident Insurance Commission

Phone 1300 302 568
Email research@maic.qld.gov.au
Web www.maic.qld.gov.au

Griffith University Research and Innovation

Phone 07 3735 4095 or 3735 4293
Email rpso@griffith.edu.au
Web www.griffith.edu.au/research

Menzies Health Institute Queensland

Phone 07 5678 8808
Email mhiq@griffith.edu.au
Web www.griffith.edu.au/menzies-health-institute-queensland

Carter Newell Lawyers

Phone 07 3000 8300
Email cn@carternewell.com
Web www.carternewell.com

Spinal Life Australia

Phone 1300 SPINAL (1300 774 625)
Email enquiries@spinal.com.au
Web www.spinal.com.au

Clinical Excellence Division Queensland Health

Phone 07 33289124
Email Statewide_Rehab_Network@health.qld.gov.au
Web www.clinicalexcellence.qld.gov.au

Community Grants Hub, National Disability Conference Grant, Department of Social Services

Phone 1800 020 283
Email support@communitygrants.gov.au
Web www.communitygrants.gov.au

Division of Rehabilitation, Princess Alexandra Hospital

Phone 07 3176 7876
Email DoRESO@health.qld.gov.au
Web www.metrosouth.health.qld.gov.au

The Hopkins Centre Research for Rehabilitation and Resilience

Phone 07 3382 1295
Email hopkinscentre@griffith.edu.au
Web www.hopkinscentre.edu.au

Synapse

Phone 1800 673 074
Email cpaxton@synapse.org.au
Web www.synapse.org.au

Health Consumers Queensland

Phone Phone 07 3012 9090
Email Email info@hcq.org.au
Web Web www.hcq.org.au



The National Injury Insurance Scheme Queensland (NIISQ)



niis.qld.gov.au

Lifetime treatment, care and support to those who sustain eligible serious personal injuries in a motor vehicle accident in Queensland, on or after 1 July 2016, regardless of fault.



Follow our platinum
sponsor on Twitter @NIIS_Q



Welcome to The Hopkins Centre quarterly publications. New issues will be available soon!



Stay on the cutting edge of practical knowledge! Bringing bold ideas, better solutions from the experiences of interdisciplinary front-line practitioners, PEER review focuses on innovation & excellence in rehabilitation.




Showcasing the latest systematic reviews in areas of importance in rehabilitation. Keep up to date by reading about the latest research evidence and clinical implications as soon as they appear in the international literature



End-user consumer-driven stories from the field that focus on what matters to people who use rehabilitation services. Keep in touch with the views of service users to benefit from lessons learned in the past.

Check out The Hopkins Centre's quarterly publications online & subscribe now at www.hopkinscentre.edu.au



The Hopkins Centre
Research for Rehabilitation and Resilience

Supporting bold ideas that can translate into better solutions



The Hopkins Centre
Research for Rehabilitation and Resilience

contact us

hopkinscentre@griffith.edu.au
+61 7 3382 1295

Menzies Health Institute of Queensland
Wayne Goss Centre,
Griffith University, Logan Campus
Meadowbrook Q 4131

Division of Rehabilitation
Princess Alexandra Hospital
199 Ipswich Road
Woolloongabba Q 4102



Username: **BIBS18**

Password: **THCBIBS18**